

Cours à Option de Neuroradiologie

RDGN 2120

Imagerie orbitaire



Pr Thierry Duprez

Professeur clinique (UCL)

Chef de Clinique (UCL-St-Luc)

<http://www.uclimaging.be>

<http://www.saintluc.be>

<http://www.centreducancer.be>

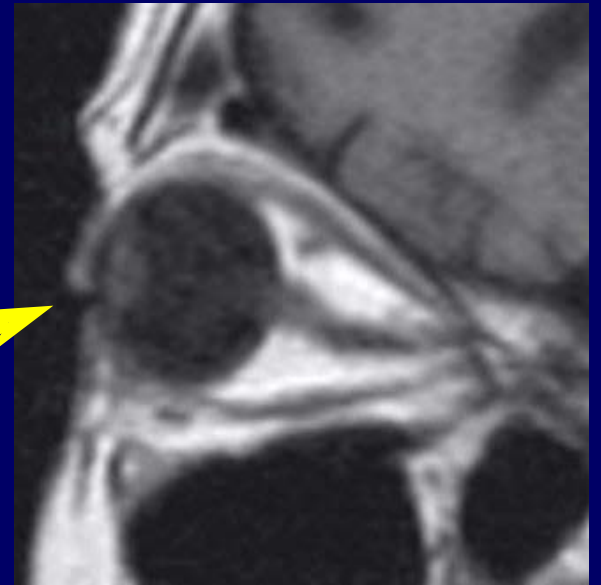
Année académique 2019-2020

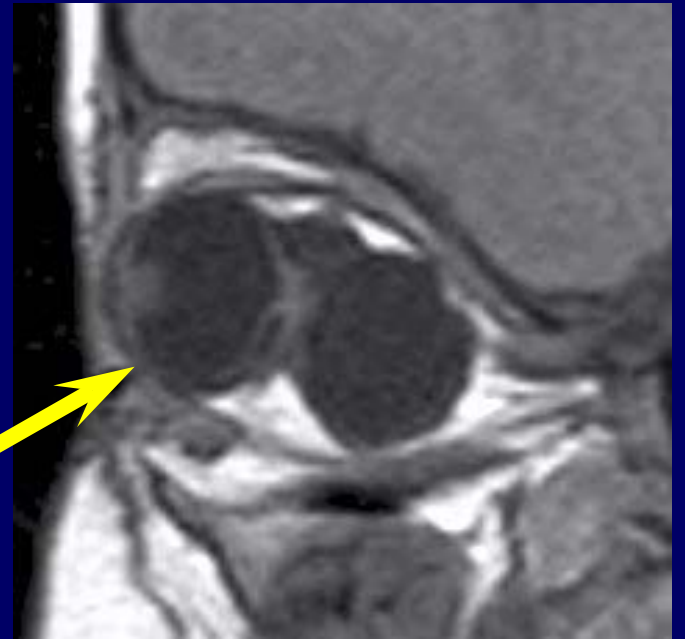
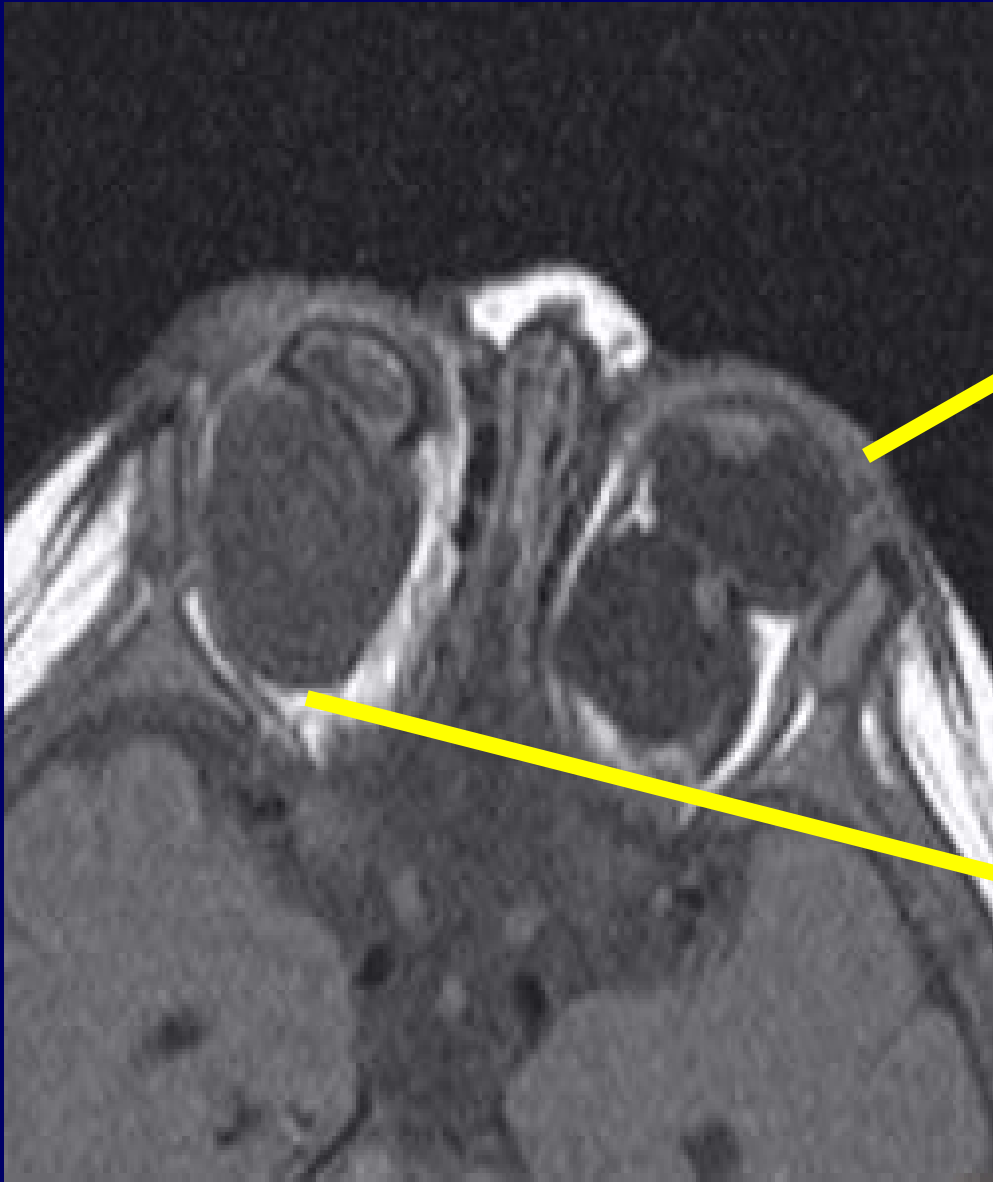


9^{ème} cours du mardi 17.12.2019 (I)

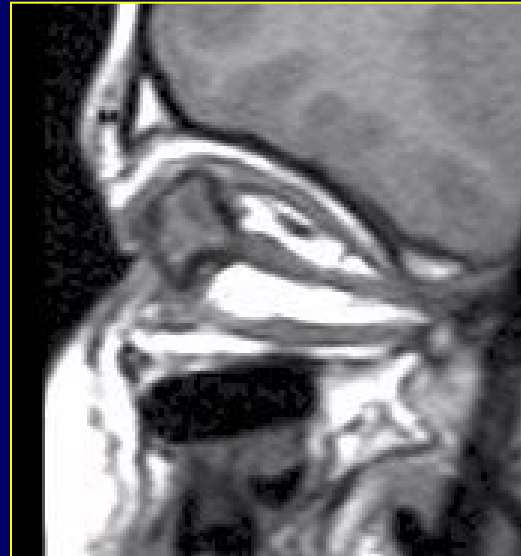
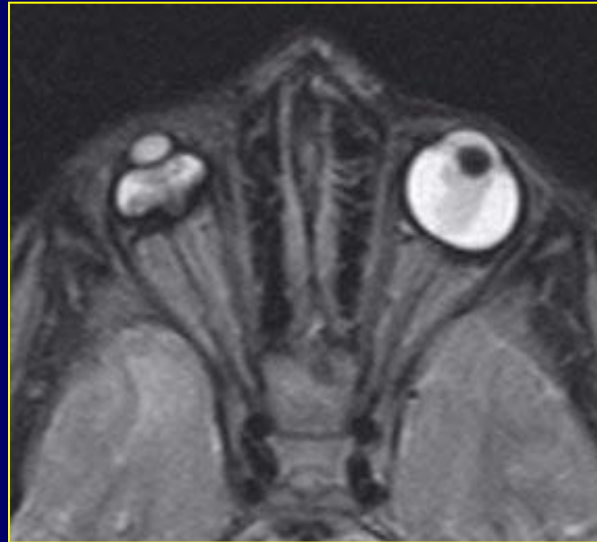
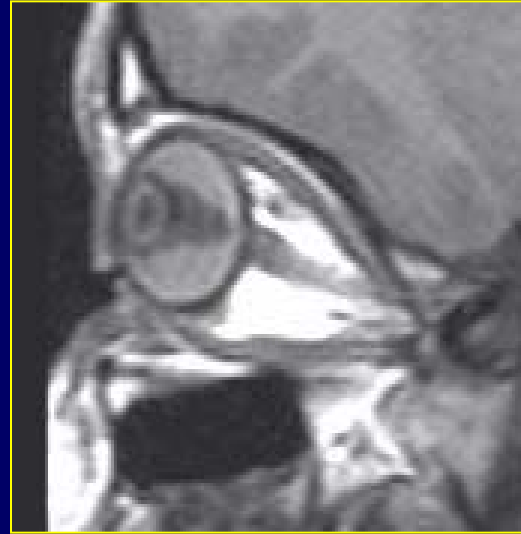
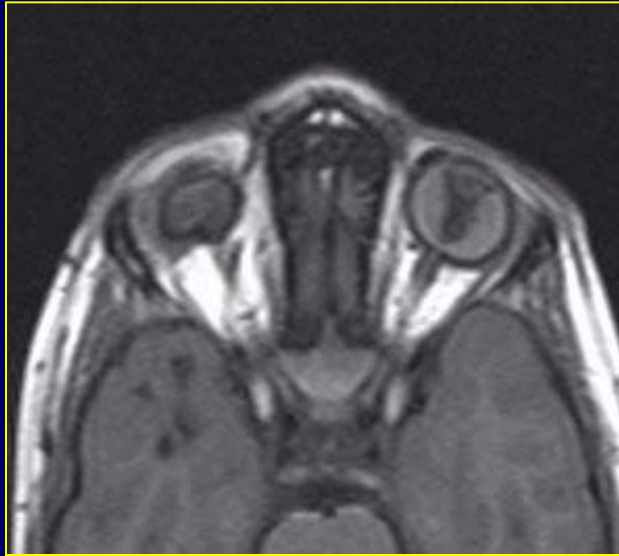
Pathologie orbitaire

1. Malformations





Malformation: HPVP

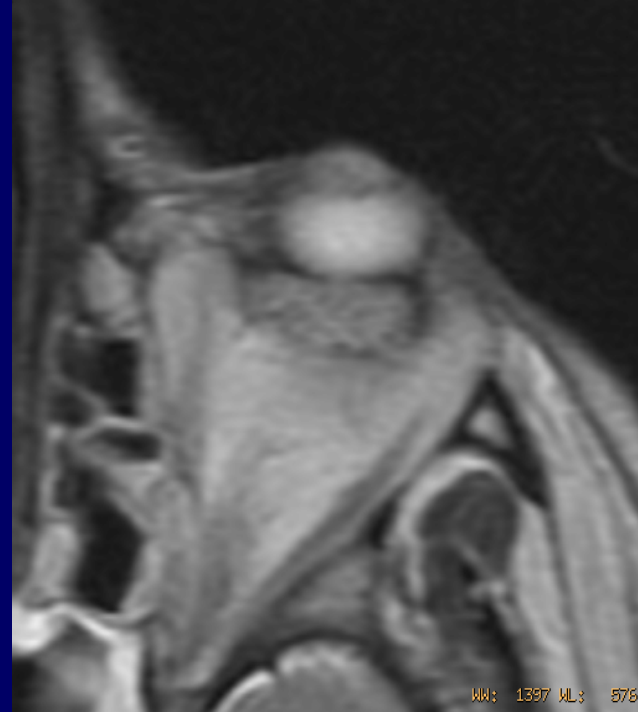
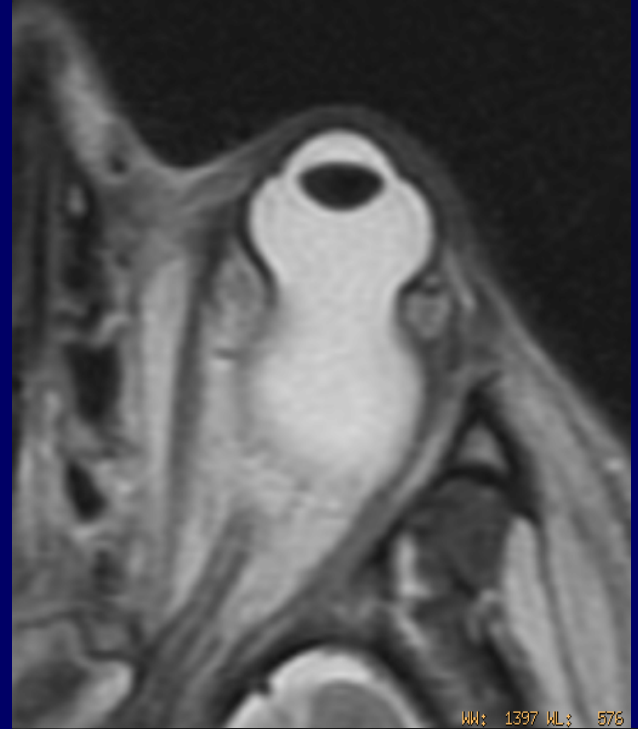
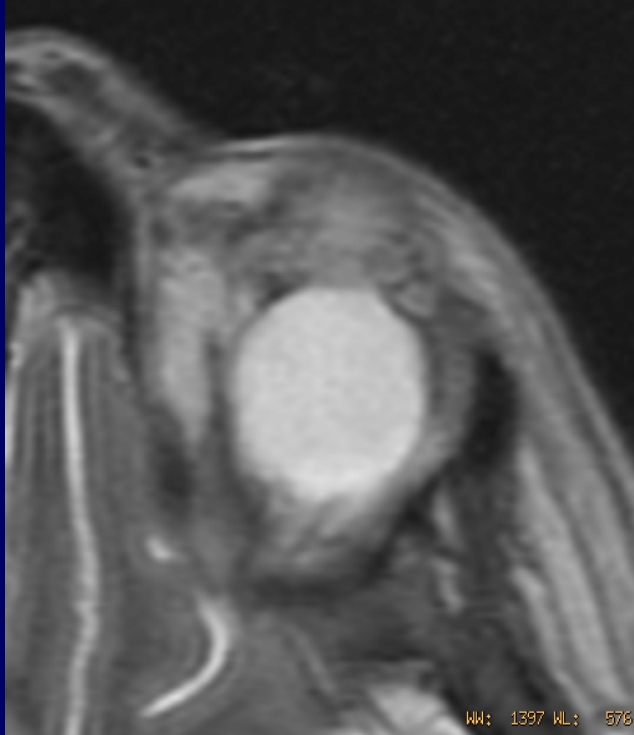


Pathologie orbitaire

2. Pathologie « dégénérative »



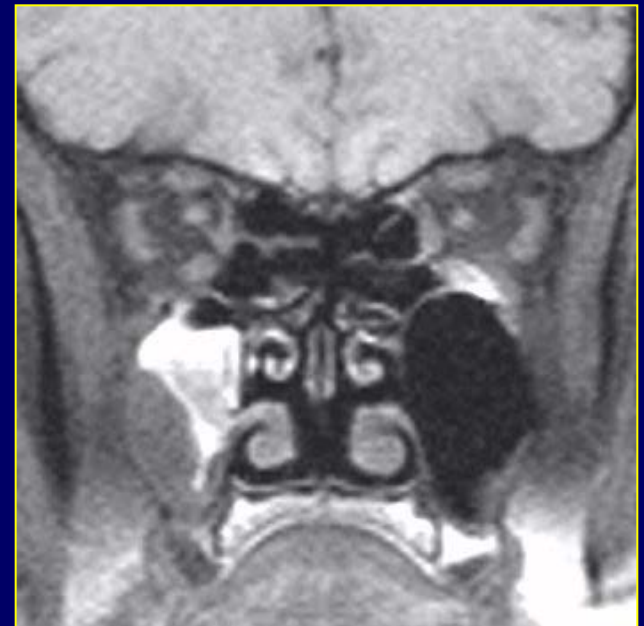
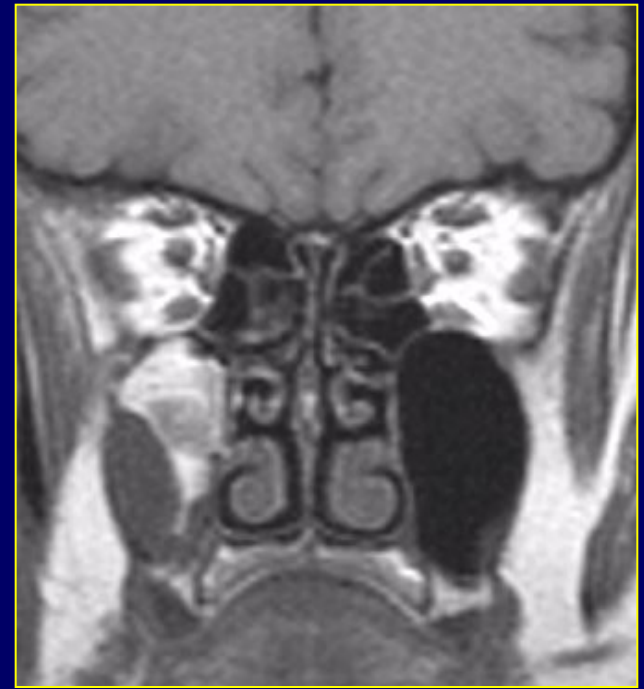
Myopie maligne



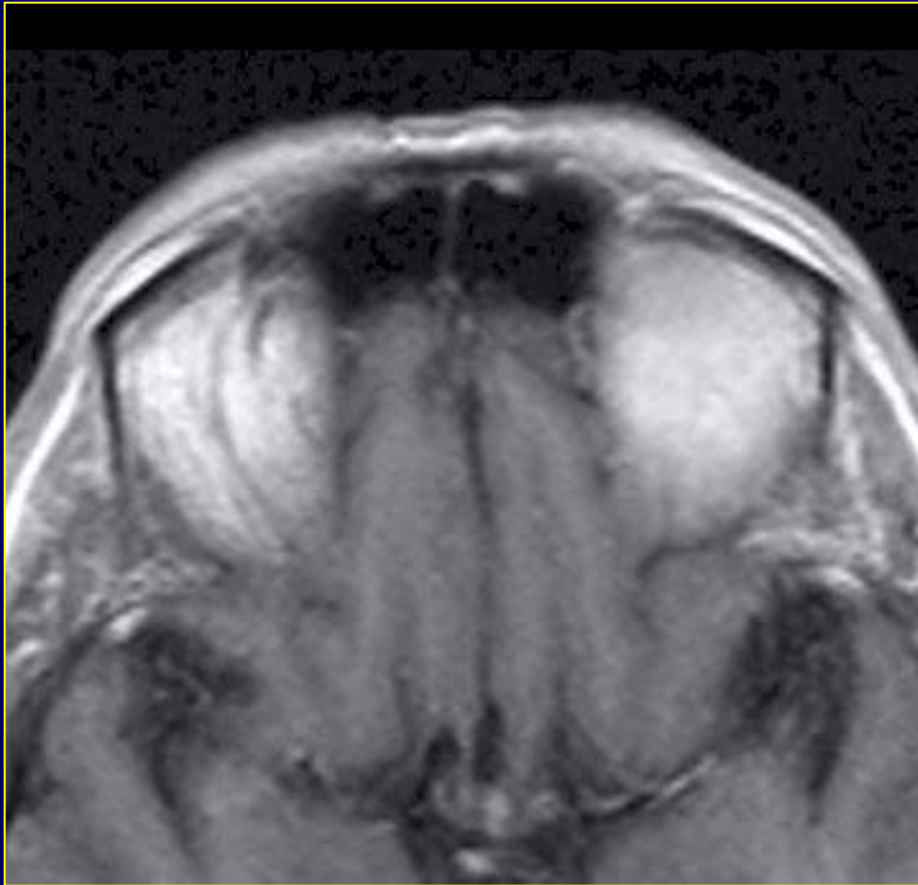
Pathologie orbitaire

3. Traumatisme
→ TDM !!!

Trauma: # du plancher orbitaire

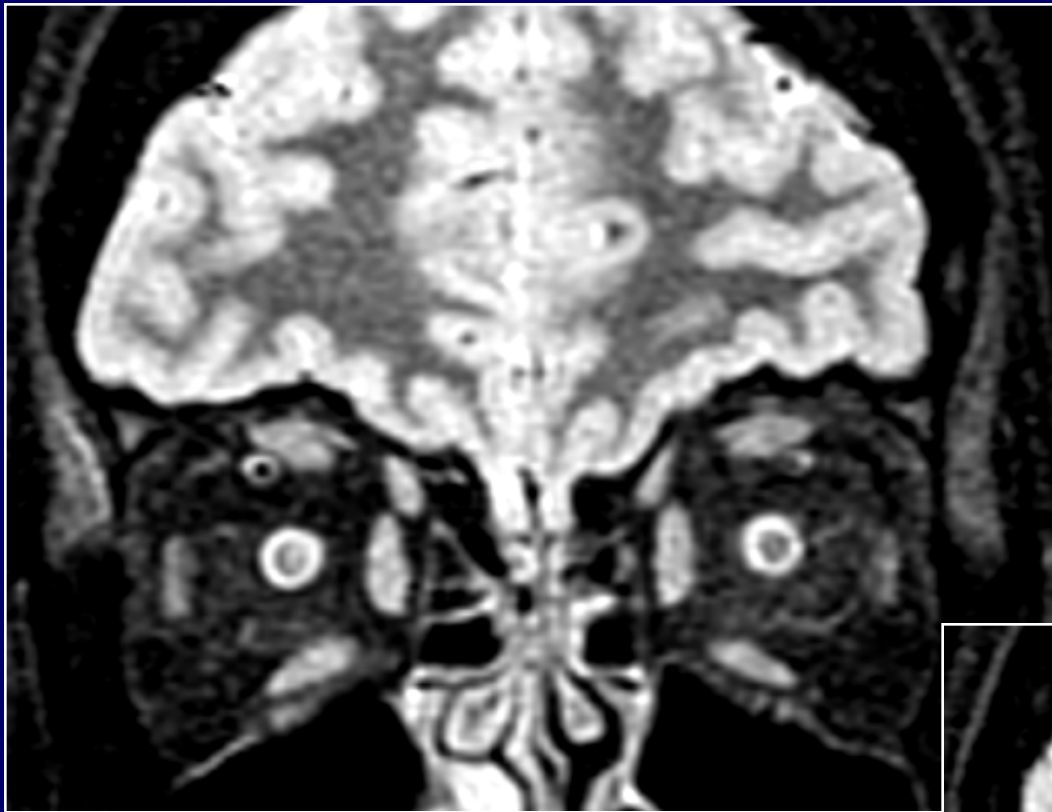


Trauma: hématome sous-périoste

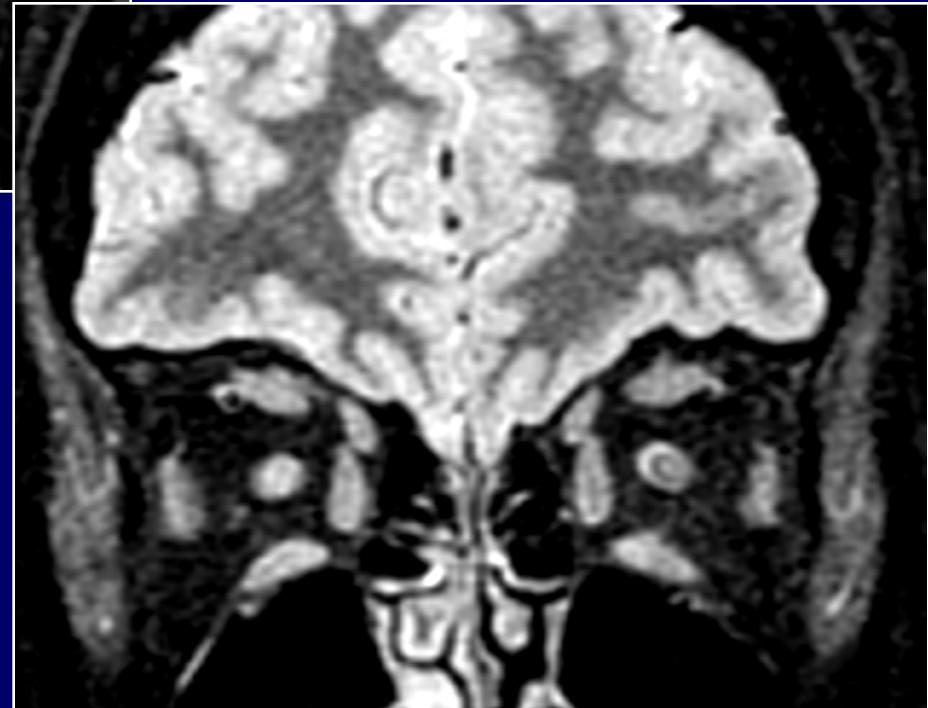


Pathologie orbitaire

4. Pathologie inflammatoire



Coupes frontales
pondérées **STIR**





FLAIR



T2

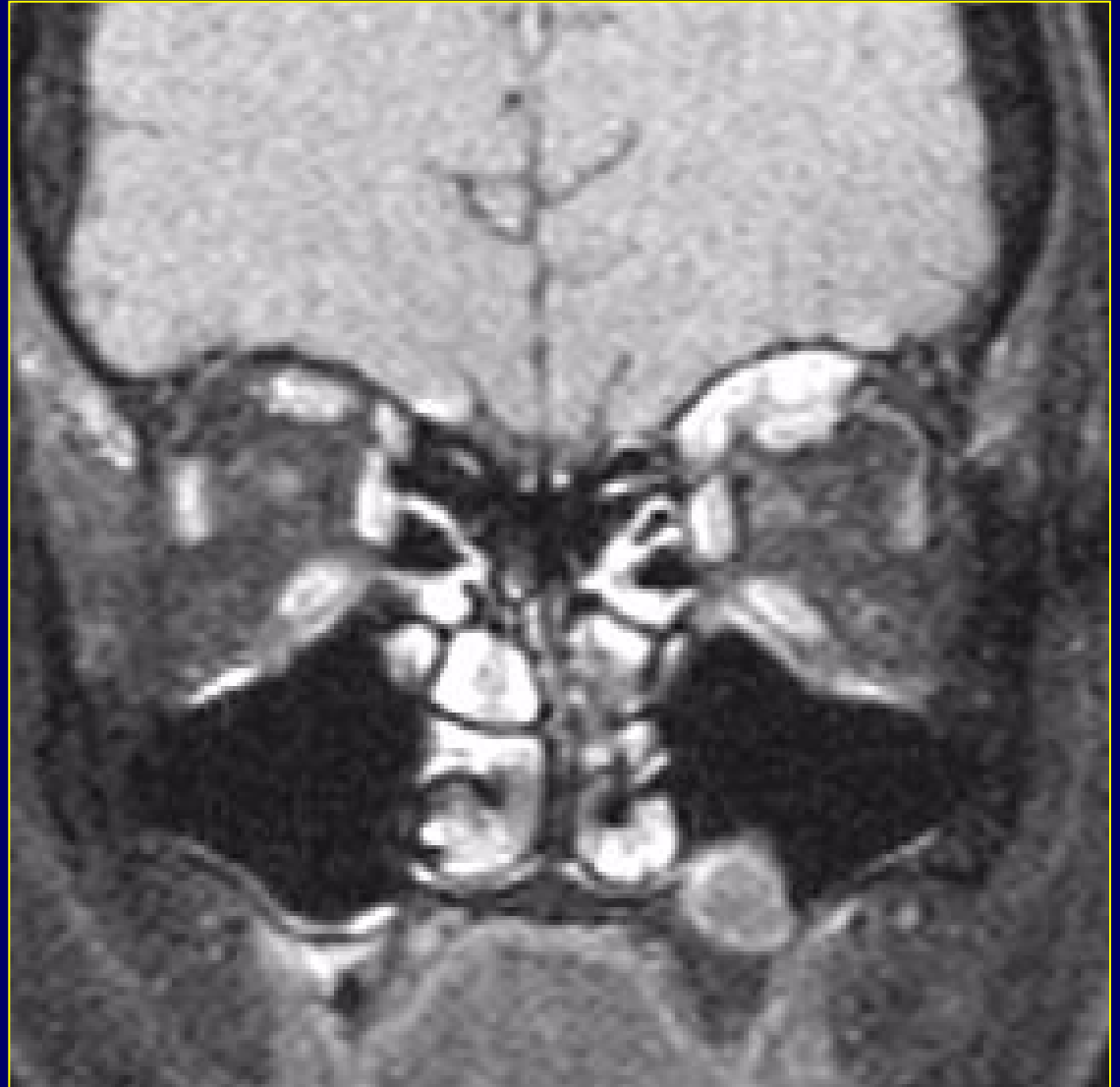
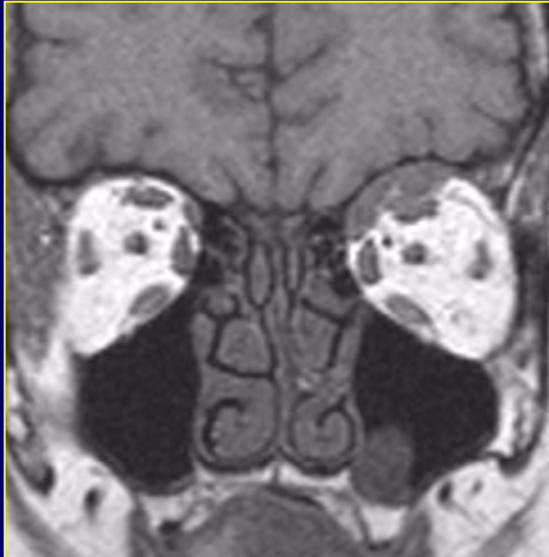


Multiple Sclerosis MS

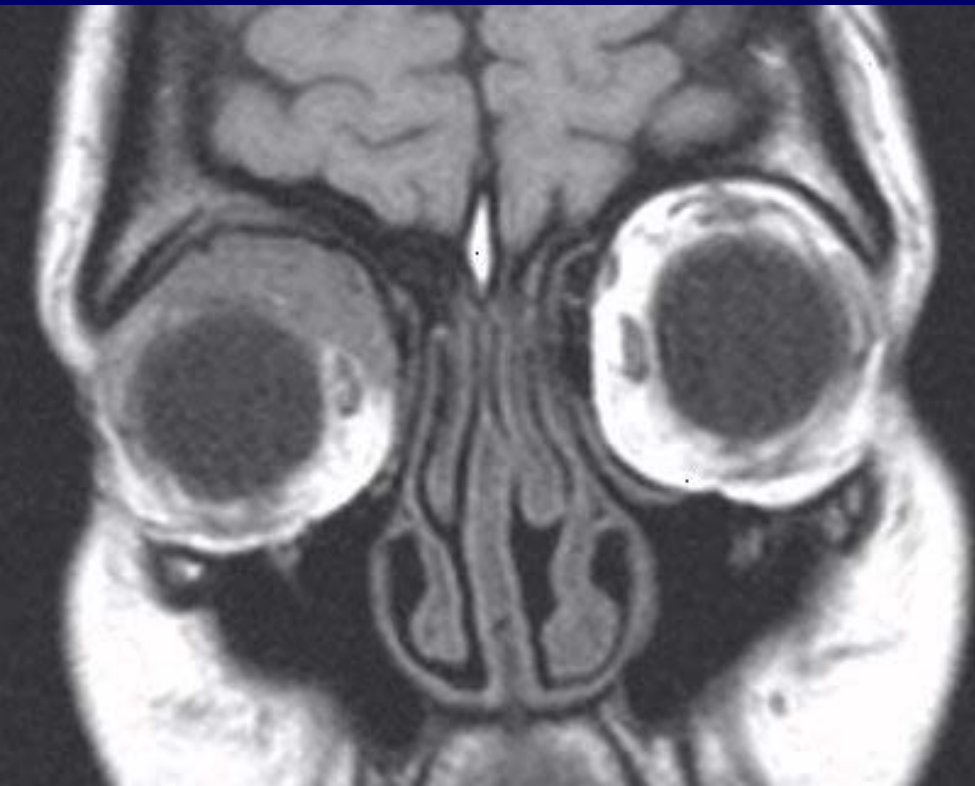
Névrite optique ischémique



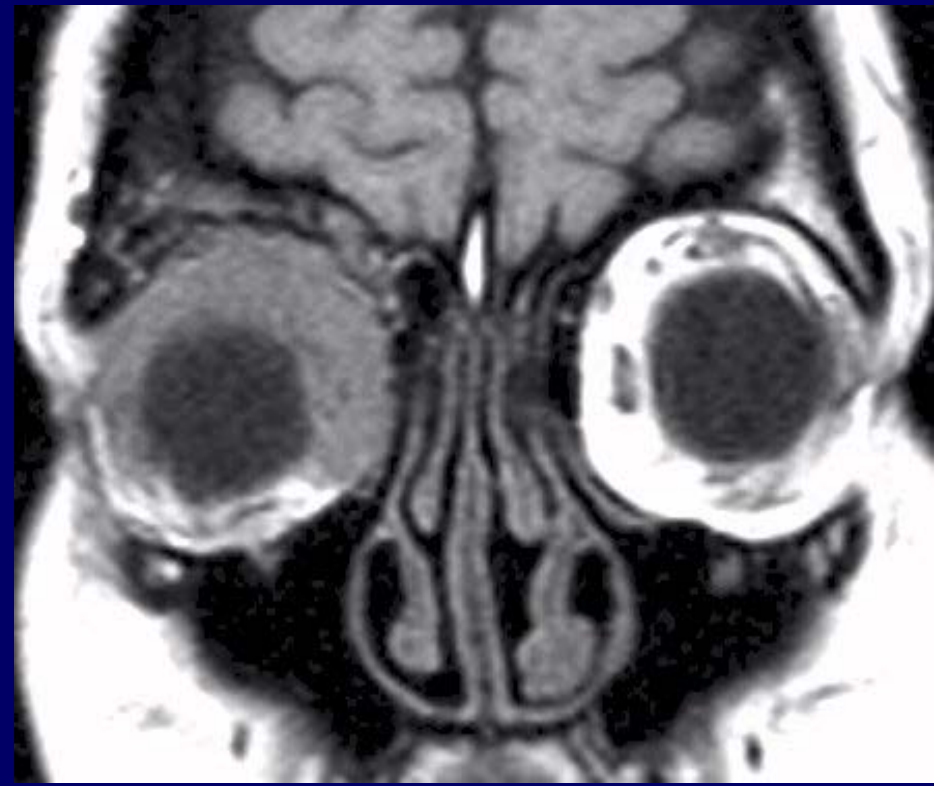
Pseudo-tumeur inflammatoire



Pseudo-tumeur inflammatoire

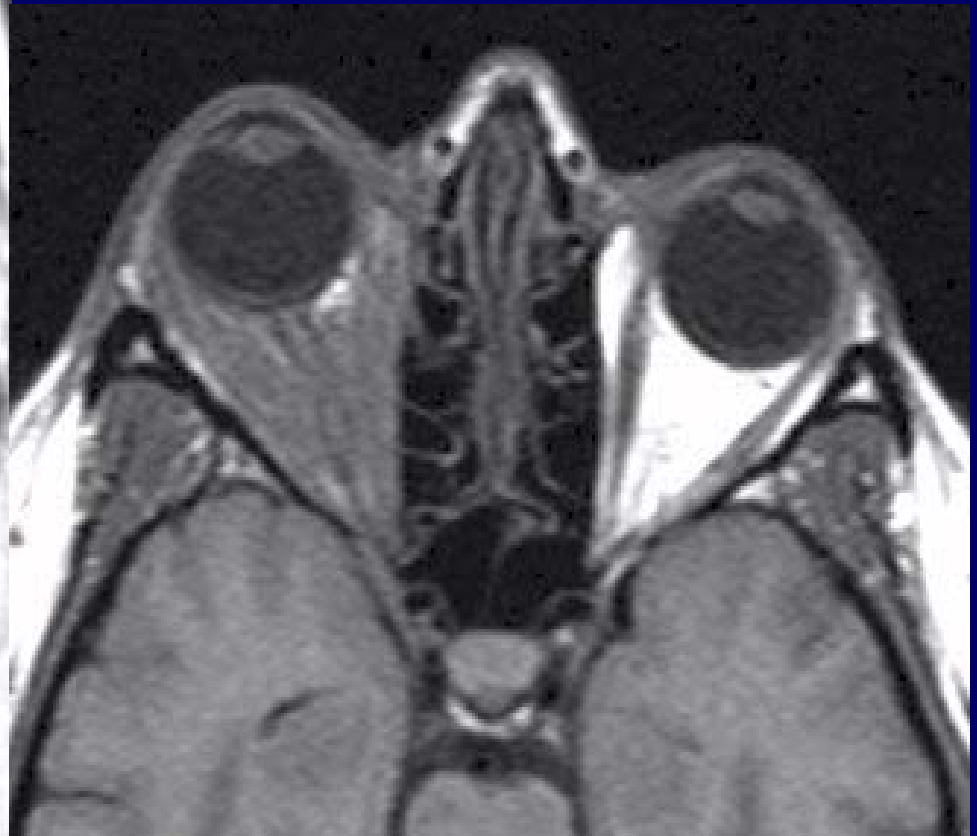


05/93



08/94

Pseudo-tumeur inflammatoire



Orbitopathie thyroïdienne

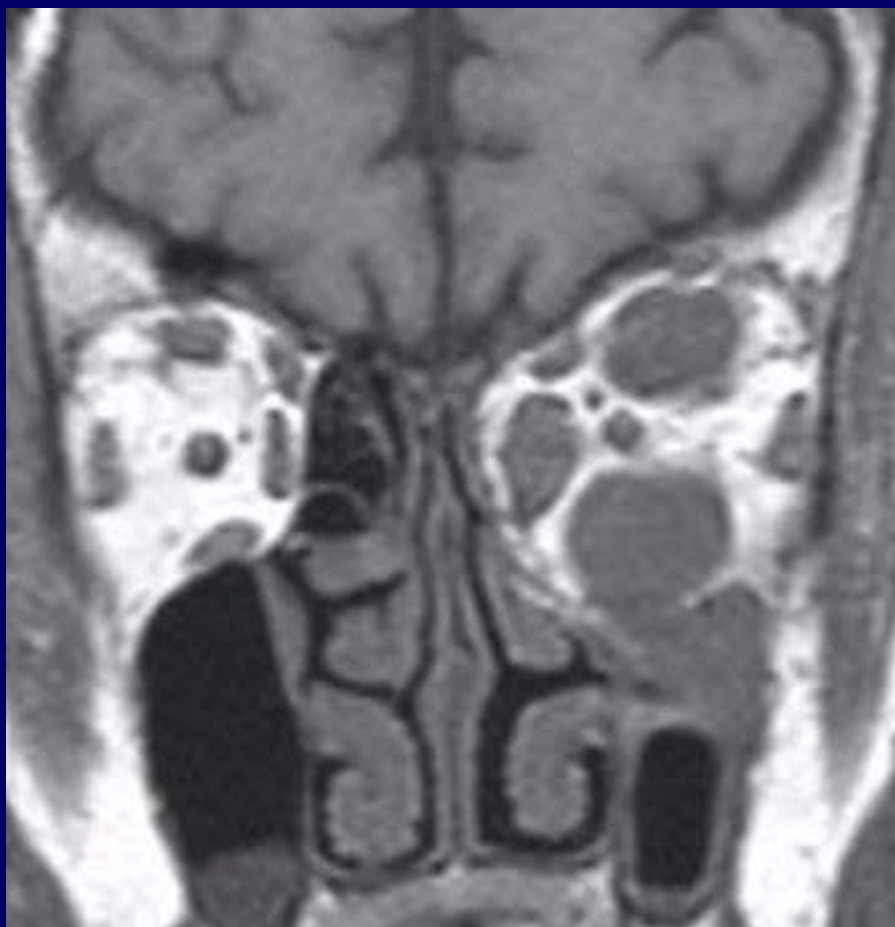
Cas évolutif suraigu



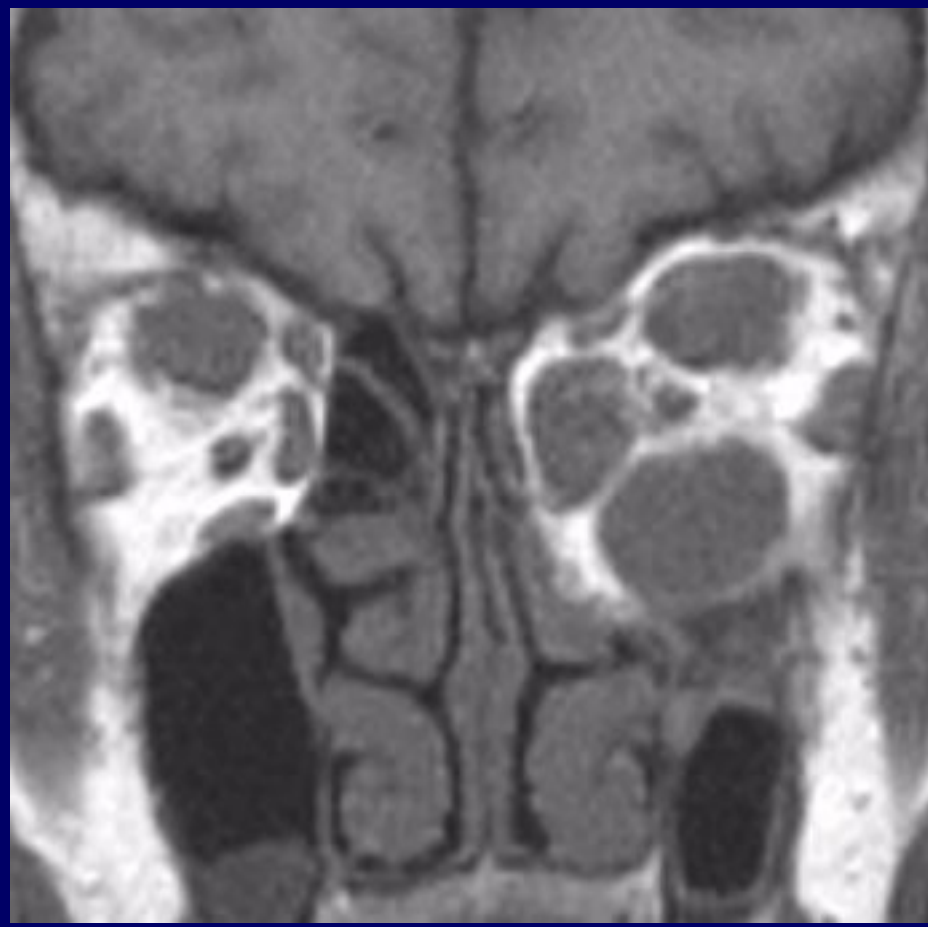
04/94



08/94



12/94



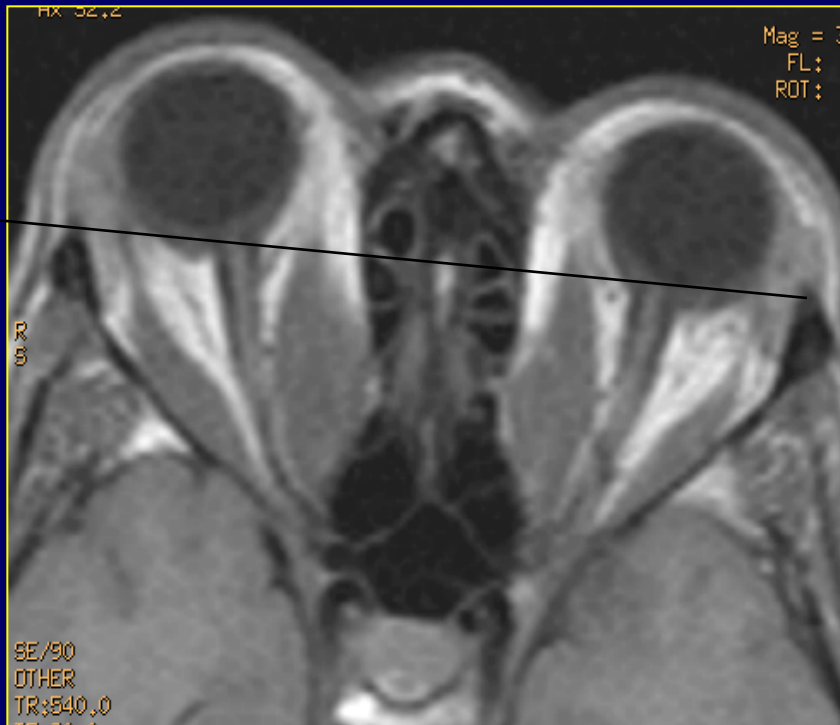
03/95



STIR

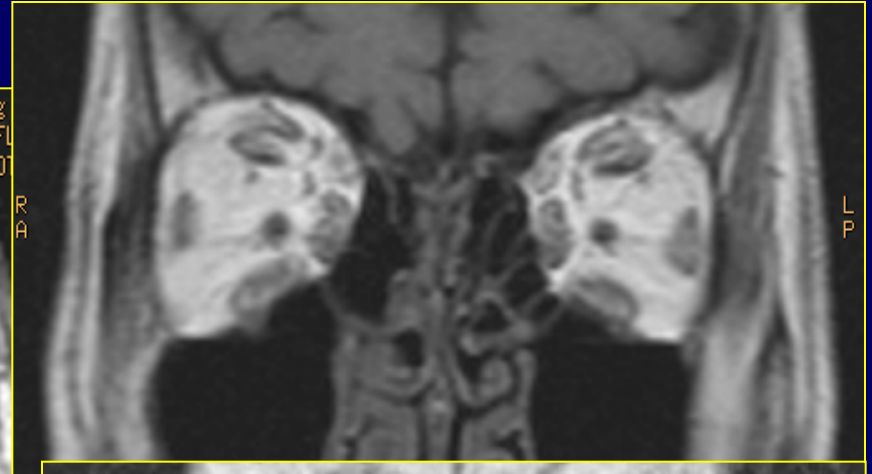
Orbitopathie thyroïdienne

Proptose par hypertrophie musculaire



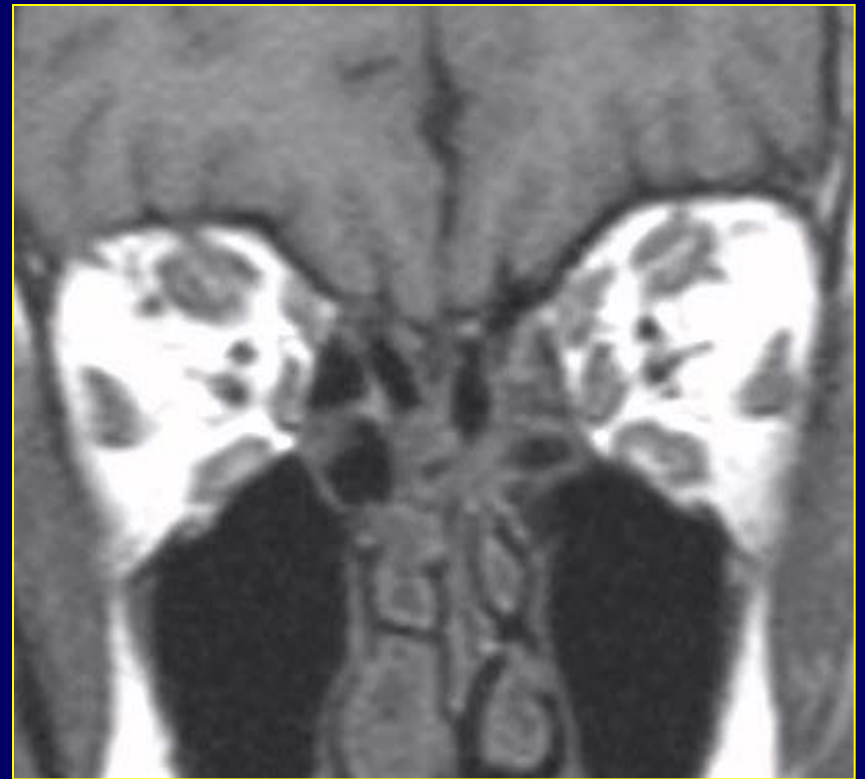
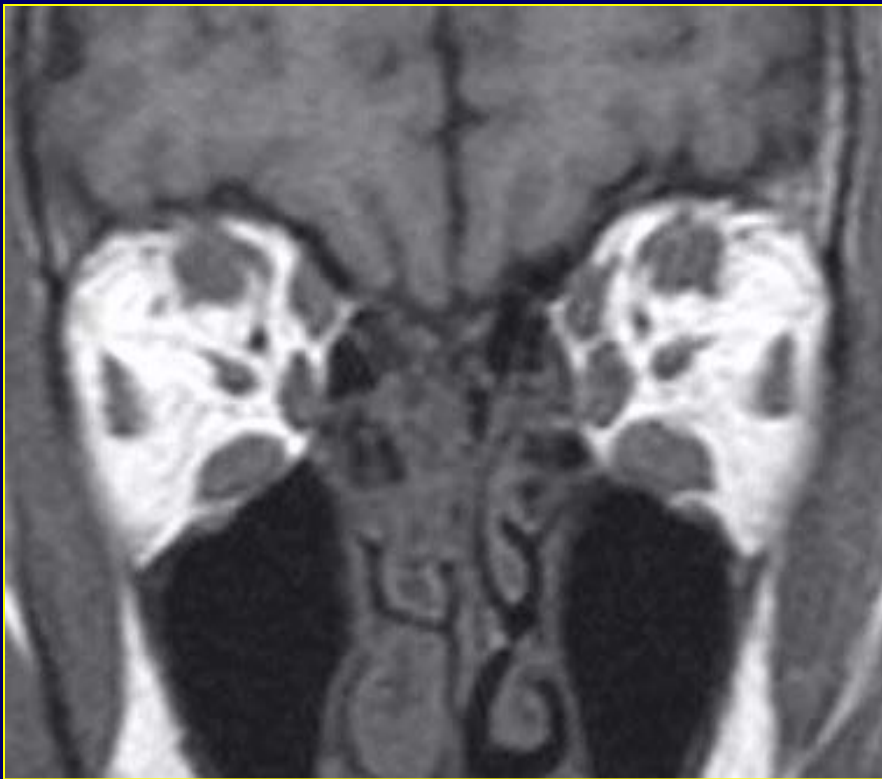
Orbitopathie thyroïdienne

Proptose par lipomatose orbitaire



Ophthalmopathie thyroïdienne

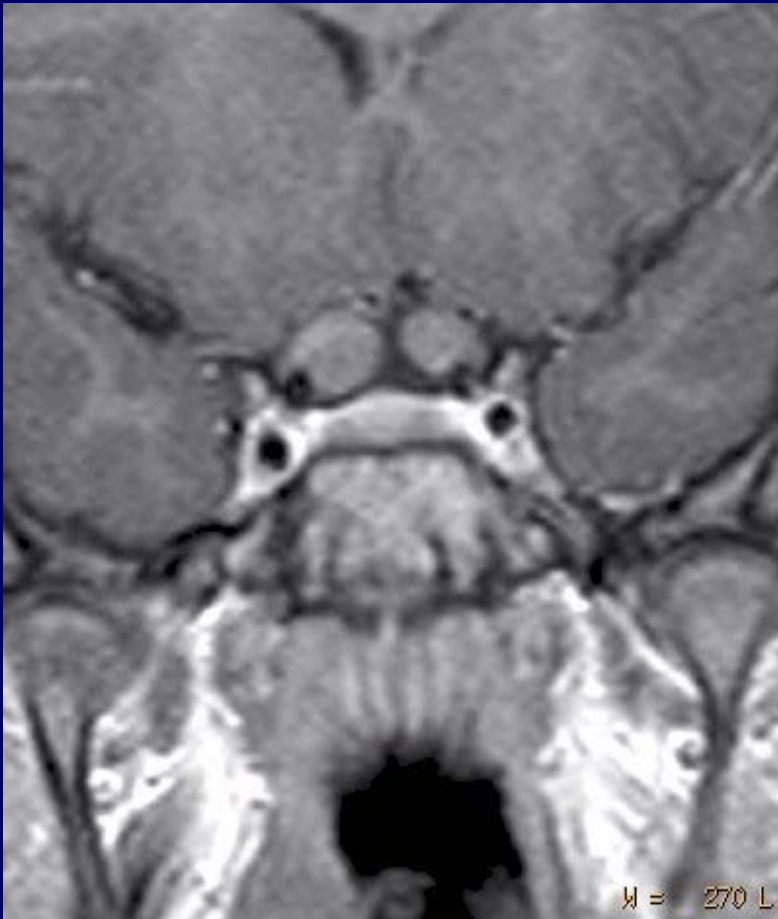
Involution spontanée



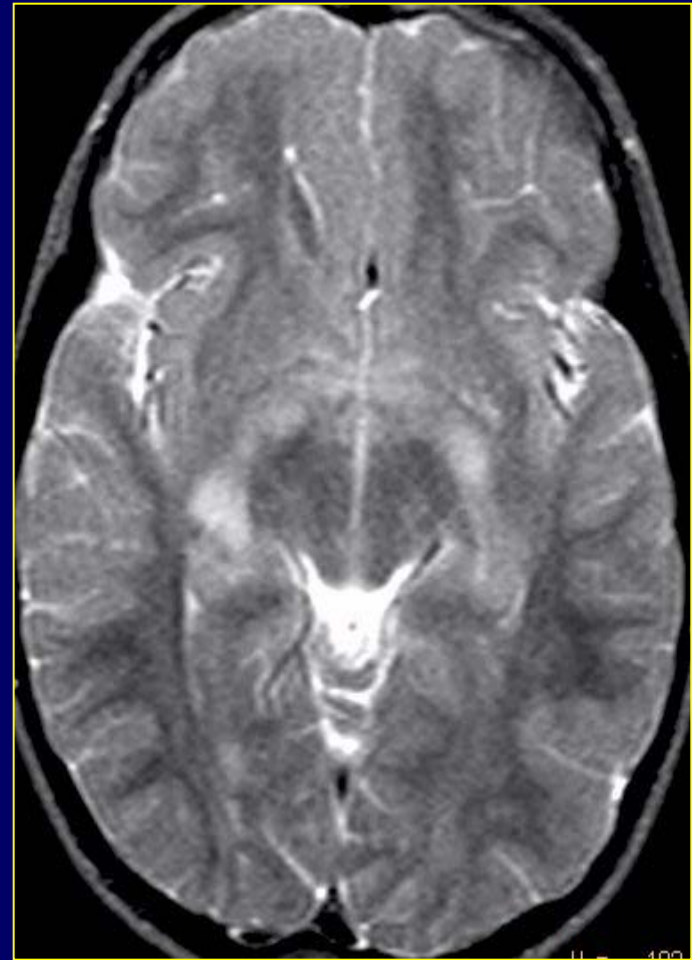
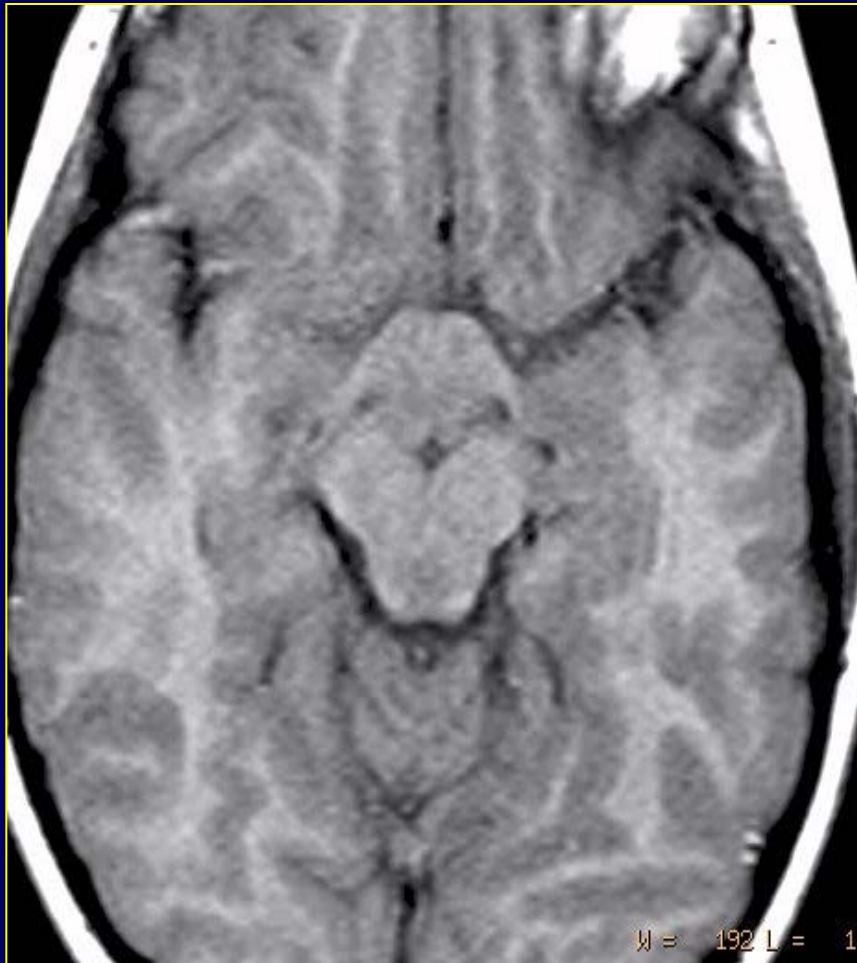
Pathologie orbitaire

5. Pathologie tumorale

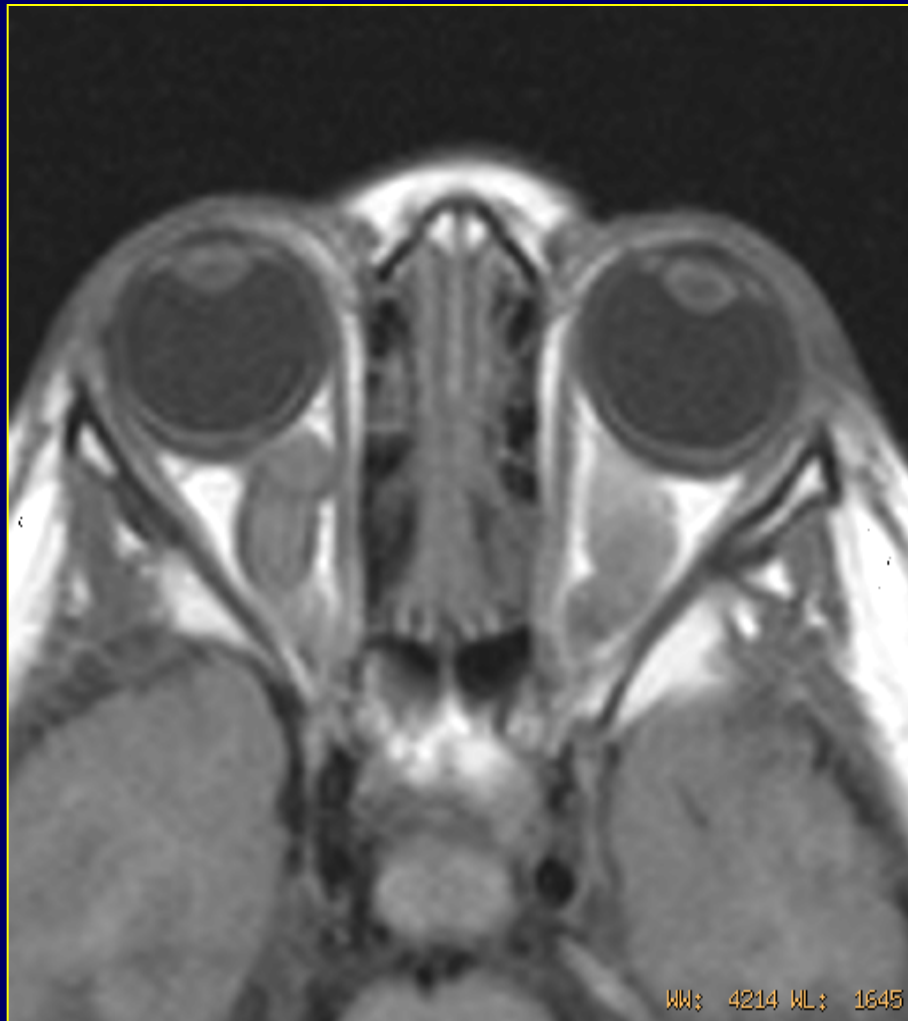
NFB: gliome optique (opto-chiasmatique)



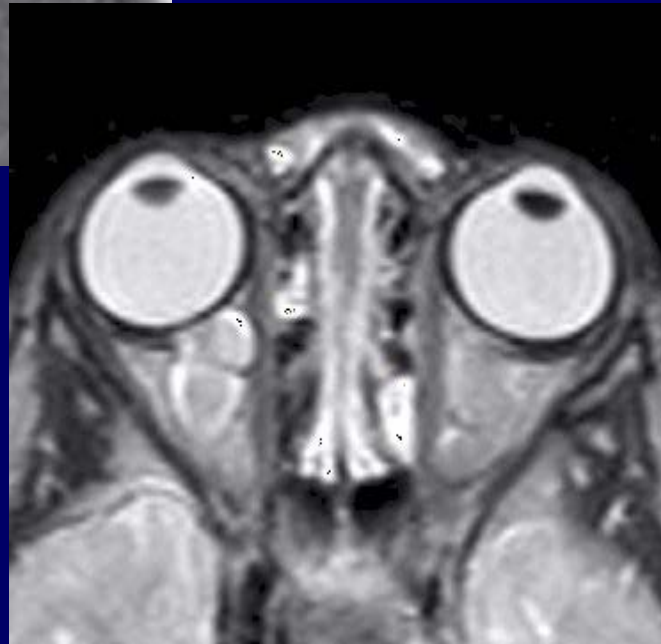
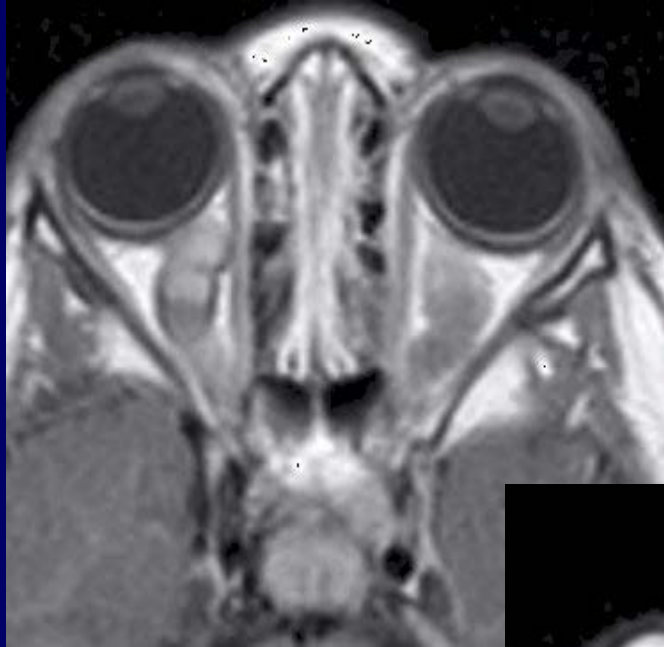
NFB: gliome opto-chiasmatique



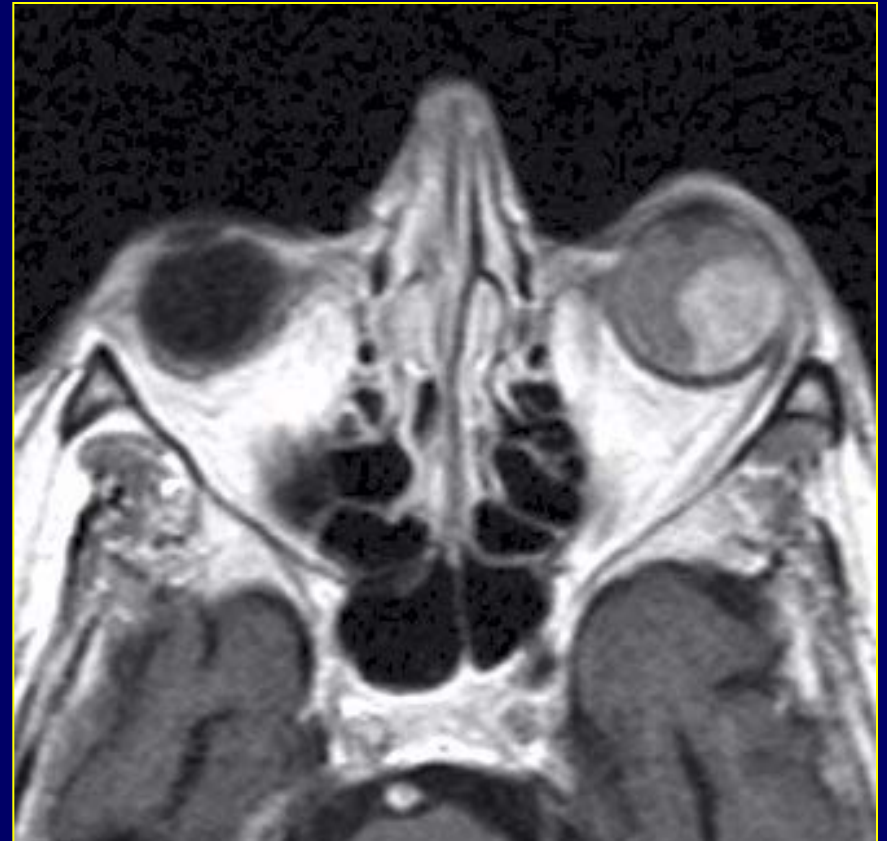
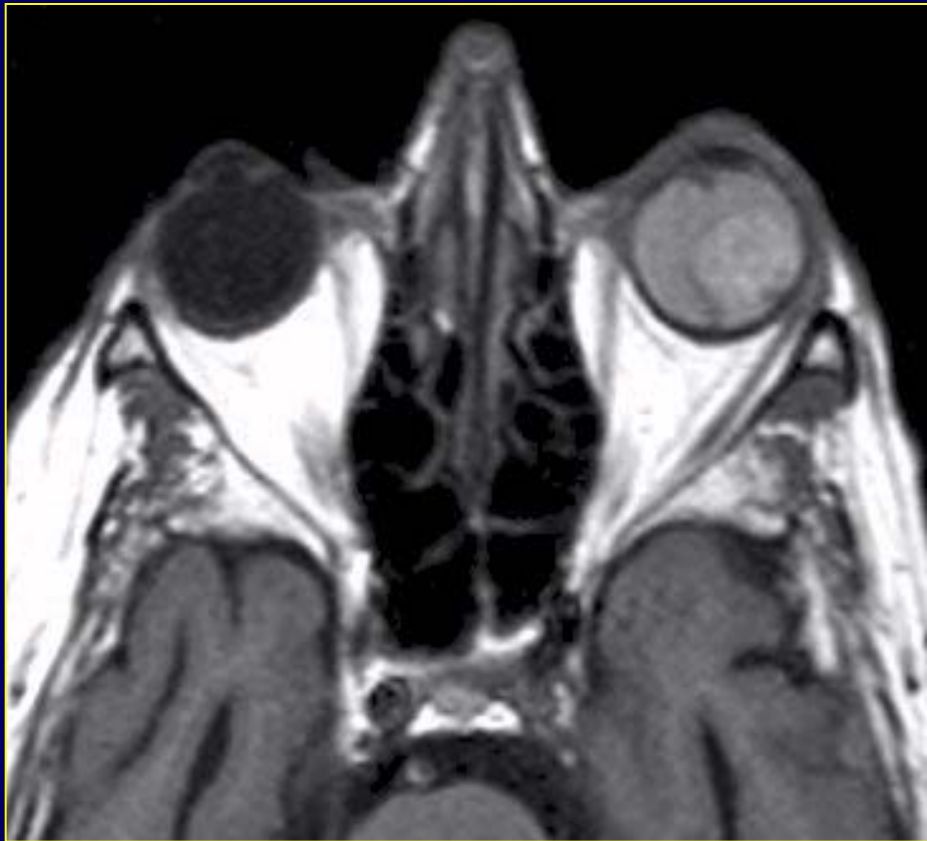
NFB: gliome optique

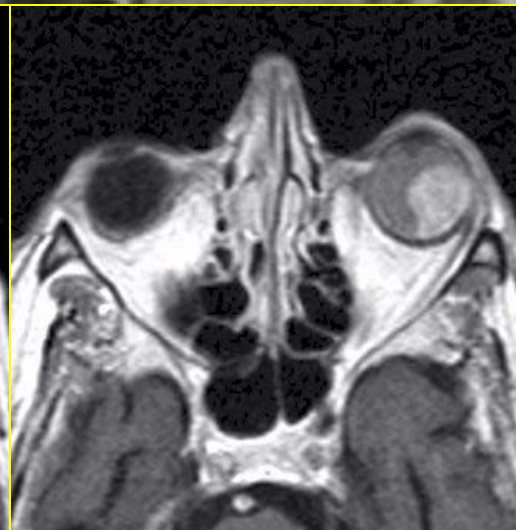
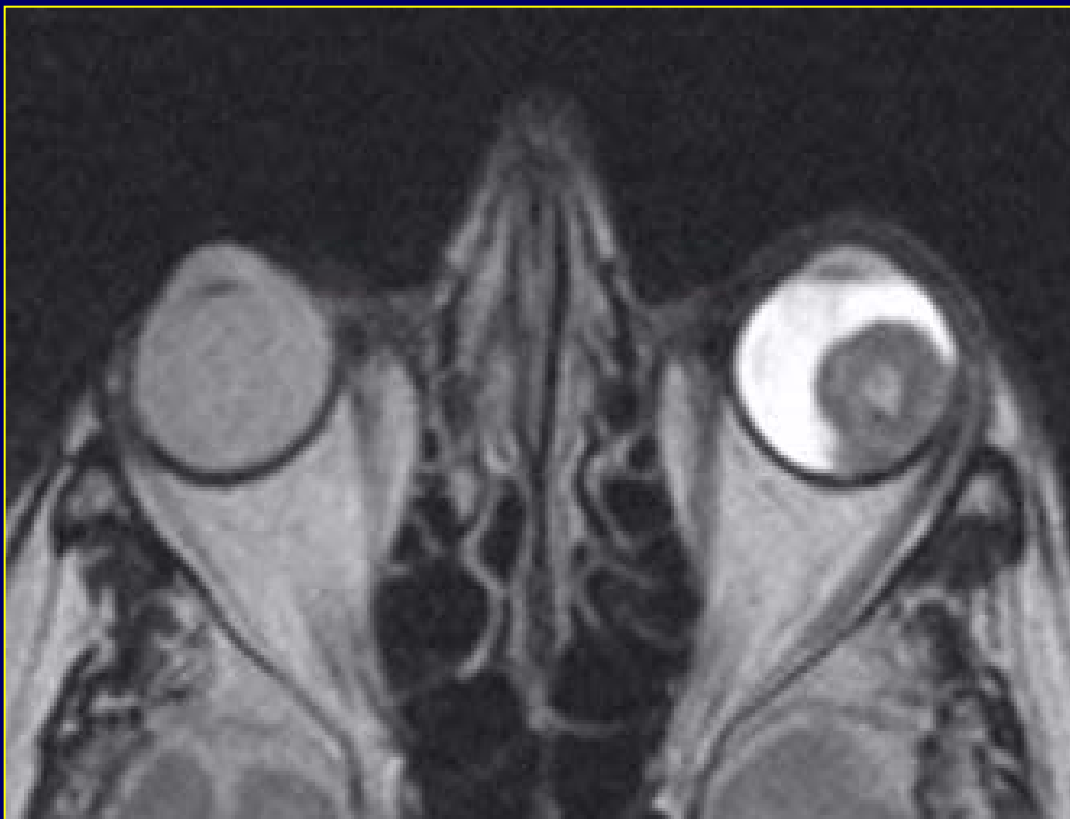


NFB: gliome optique

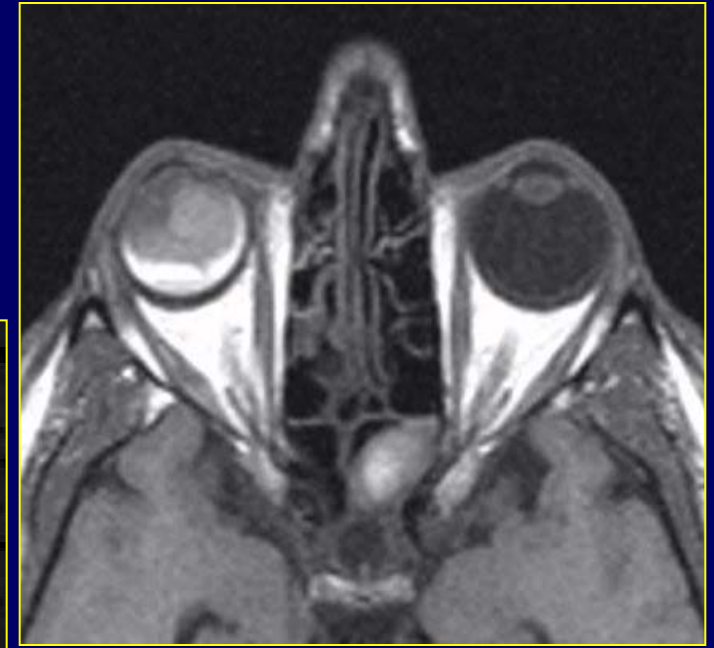


Tumeurs I.B.: mélanome malin

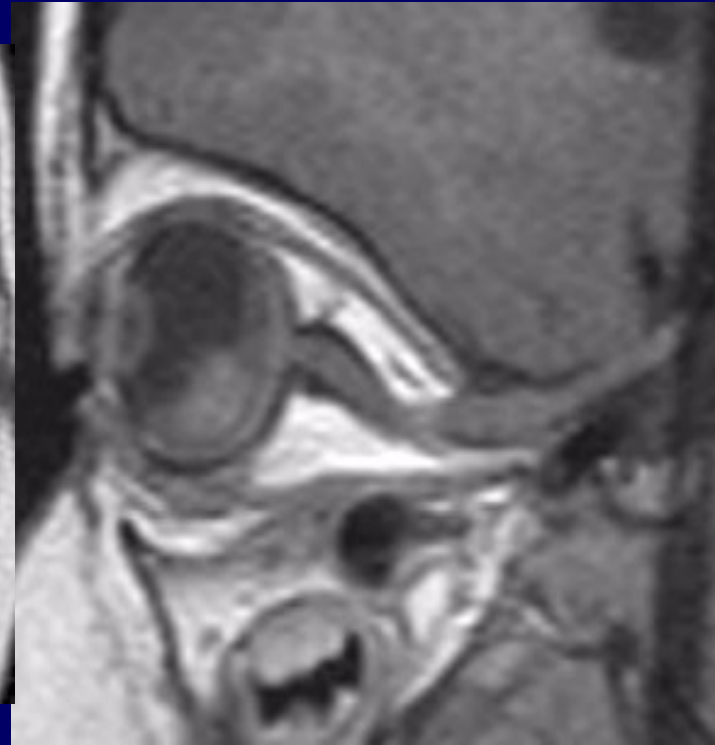




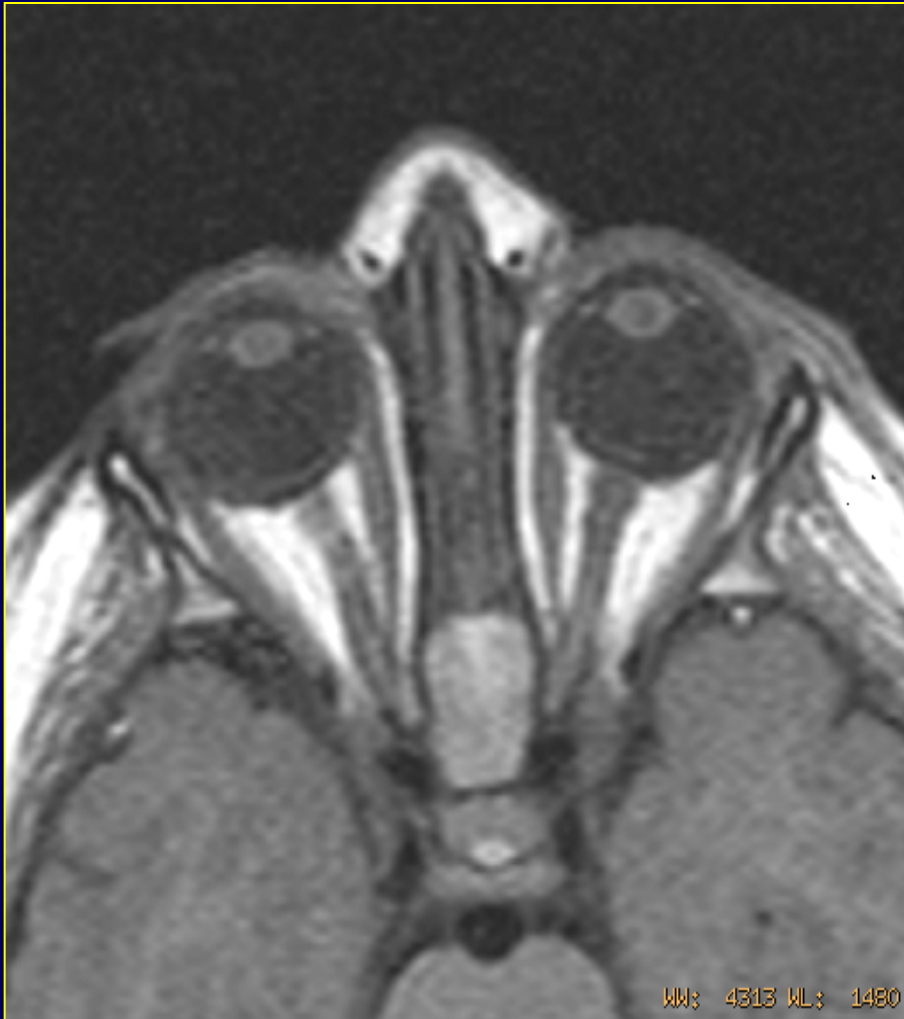
Tumeurs I.B.: mélanome malin



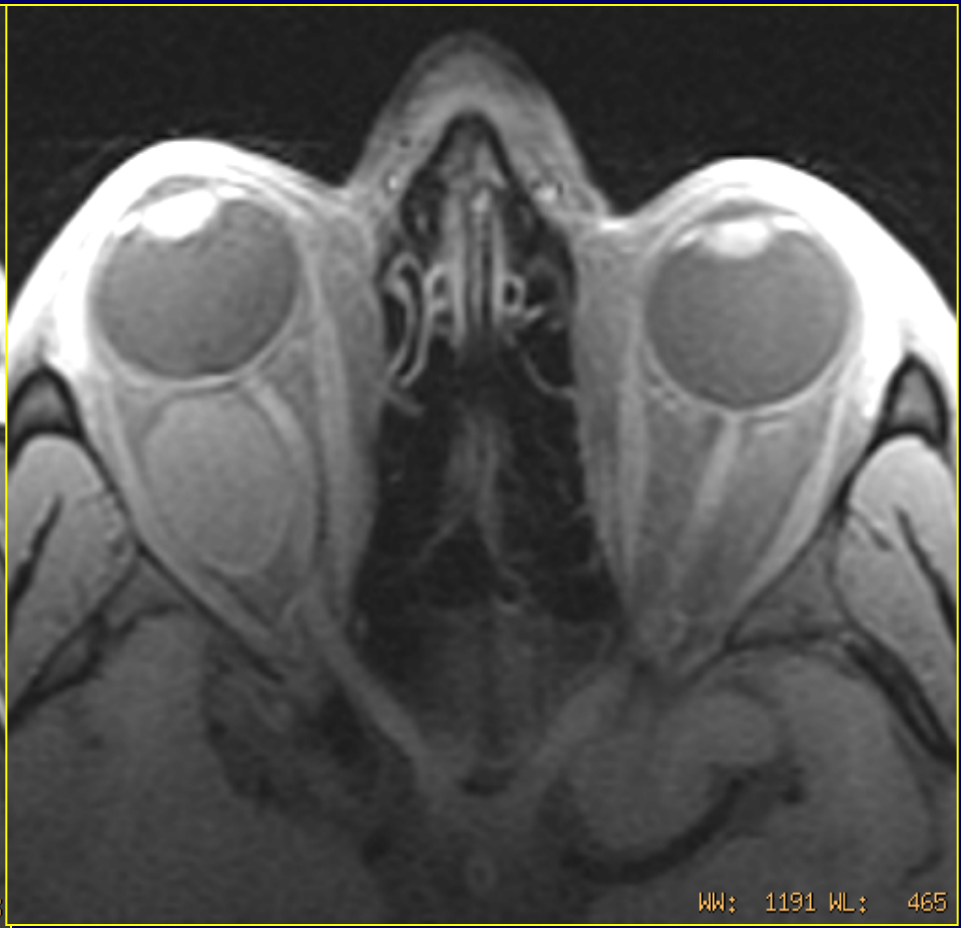
Tumeurs I.B.: rétinoblastome

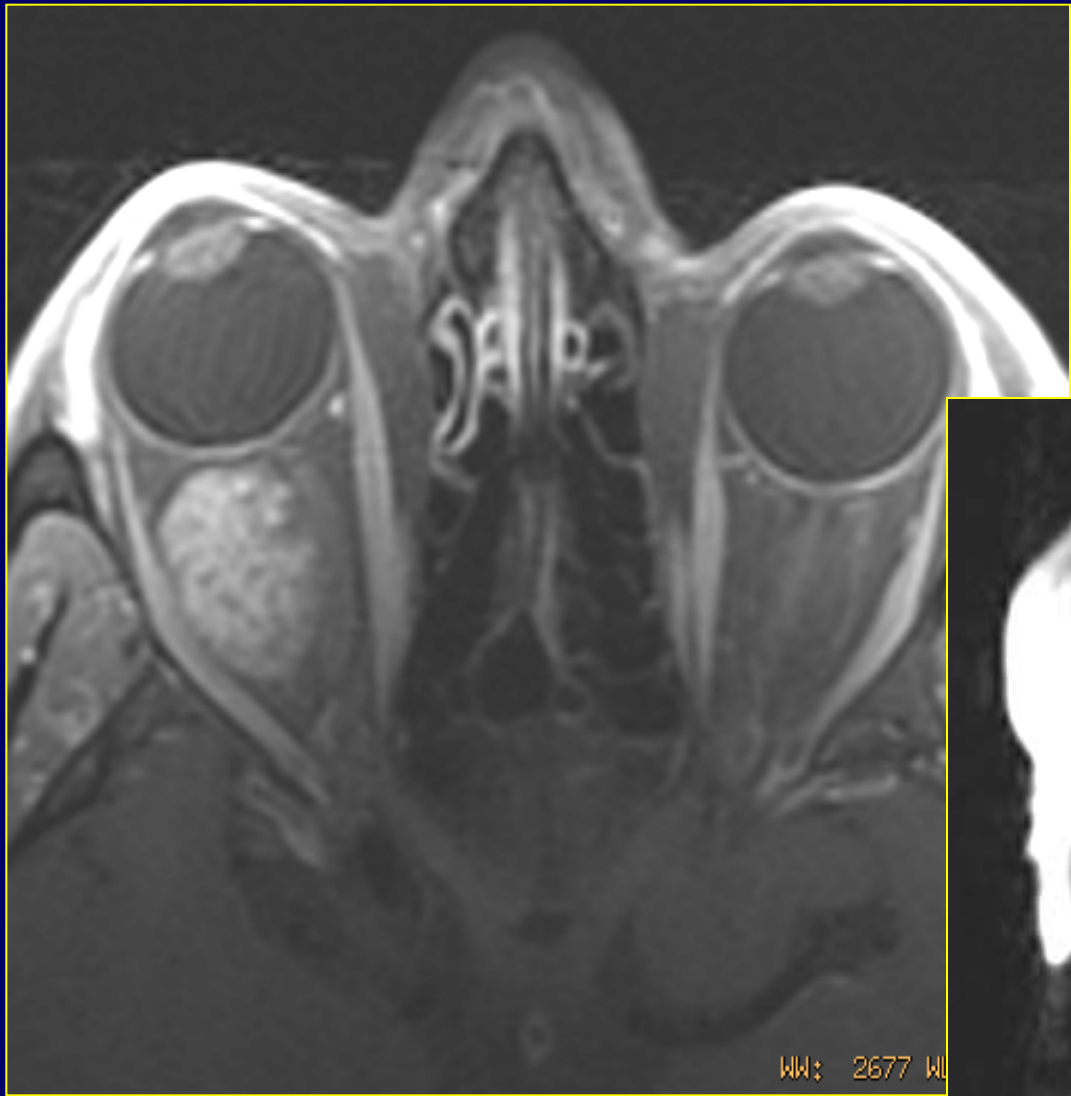


Tumeurs I.B.: rétinoblastome



Pathologie tumorale bénigne: hémangiome



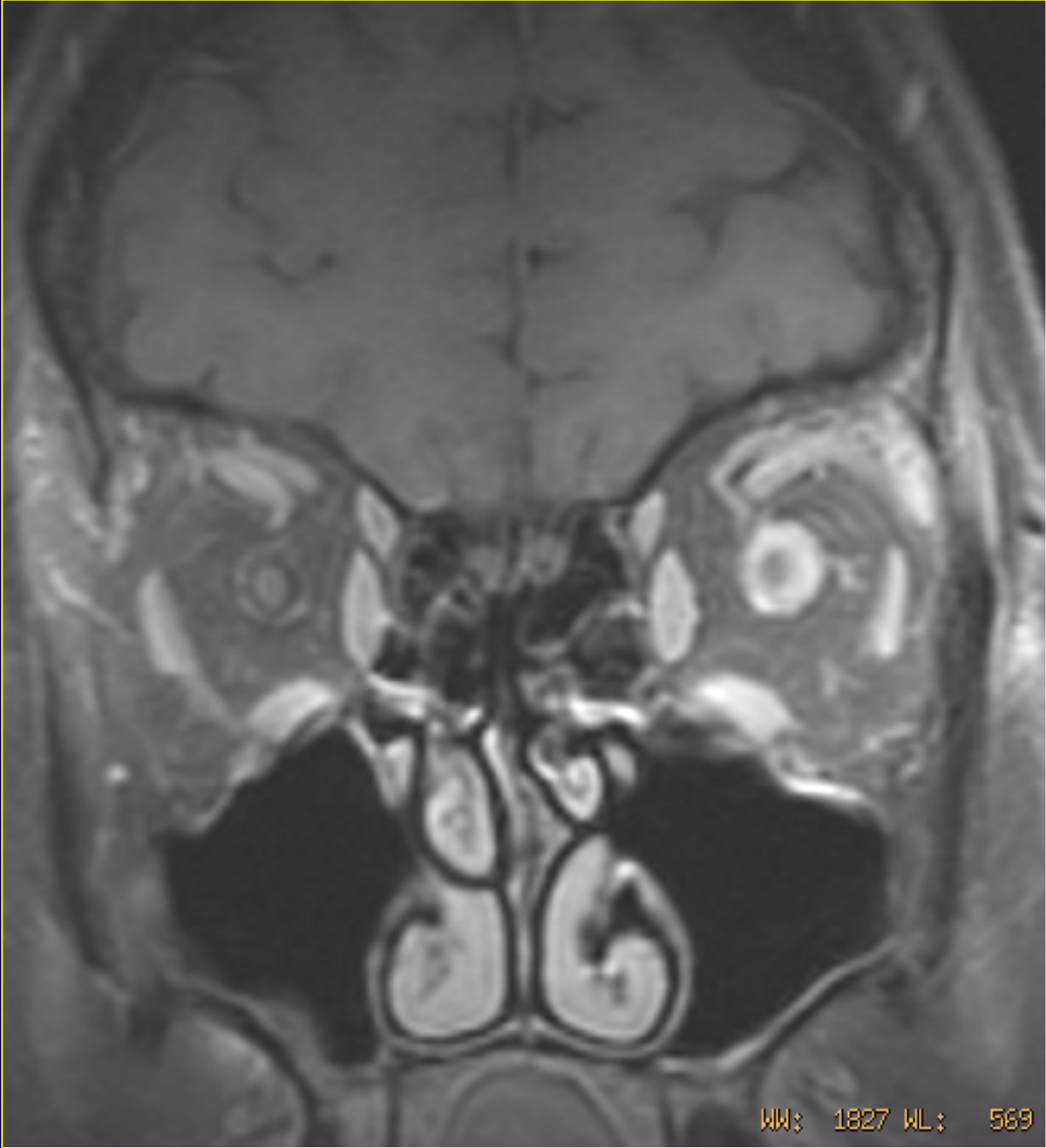


Tumeurs E.B.:

méningiome péri-optique







WW: 1827 WL: 569

